

Key Vocabulary	
<b>adult</b>	A fully grown animal or plant.
<b>develop</b>	To grow bigger and become stronger.
<b>life cycle</b>	The changes living things go through to become an adult.
<b>offspring</b>	The child of an animal.
<b>young</b>	Offspring that has not reached adulthood.
<b>live young</b>	Offspring that has not hatched from an egg.

Some animals give birth to **live young**.



Some animals lay eggs which the **young** hatch from.

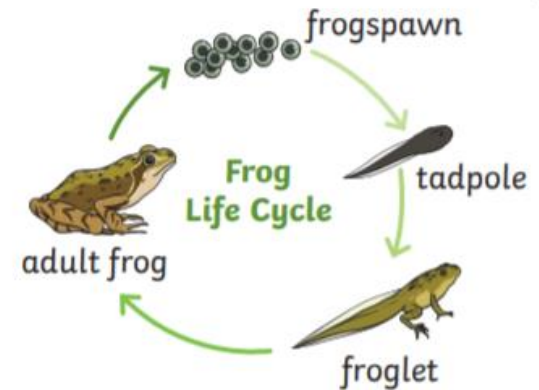
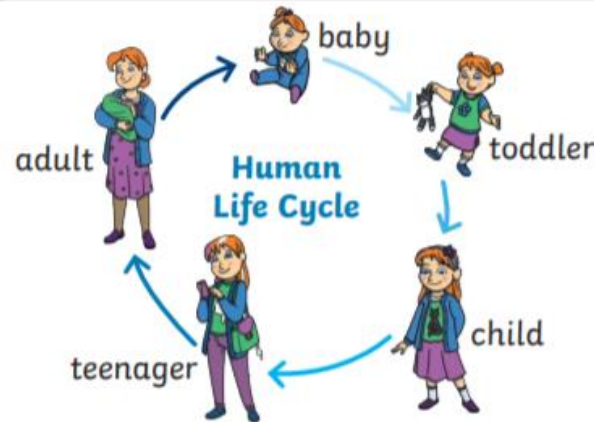


Both of these types of **young** then **develop** into **adults**.

Some **offspring** look like their **adult** when they are born.



Some **offspring** do not look like their **adult** when they are born.



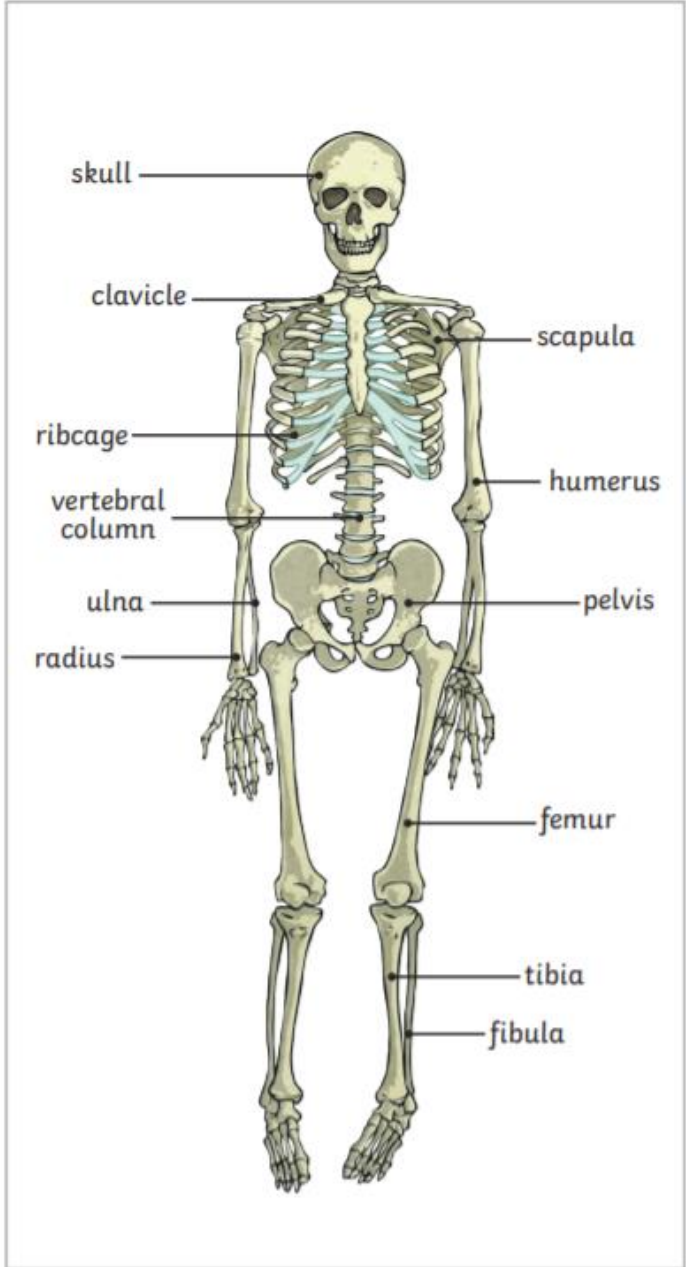
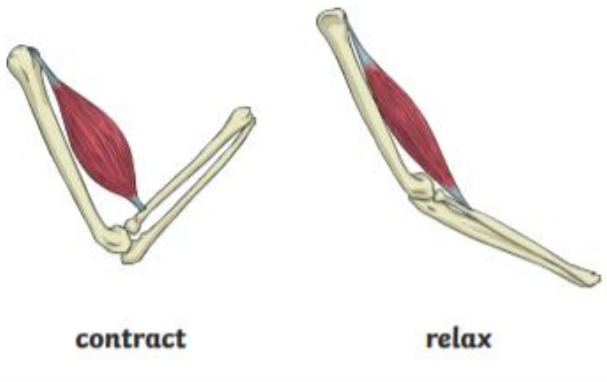
All **young** animals change as they go through the different stages of their **life cycle** and grow into **adults**.

Key Vocabulary	
<b>vertebrate</b>	animals with backbones
<b>invertebrate</b>	animals without backbones
<b>muscles</b>	soft tissues in the body that contract and relax to cause movement
<b>tendons</b>	cords that join muscles to bones
<b>joints</b>	areas where two or more bones are fitted together

Skeletons do three important jobs:

- protect organs inside the body;
- allow movement;
- support the body and stop it from falling on the floor.

Skeletal **muscles** work in pairs to move the bones they are attached to by taking turns to contract (get shorter) and relax (get longer).



**vertebrate**

↓

**endoskeleton** – a skeleton on the inside of the body that supports and protects it

**invertebrate**

↙ ↘

**exoskeleton** – a skeleton on the outside of the body that supports and protects it

**hydrostatic skeleton** – a skeleton made up of a fluid-filled compartment in the body called a coelom, mainly found in soft-bodied animals